



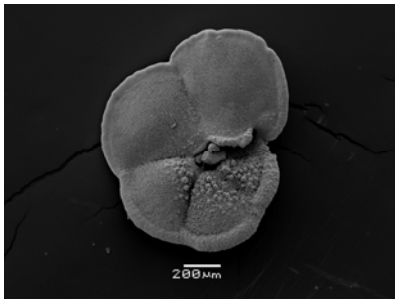
Western Regional Group of the Geological Society

## Western Regional Group Guest Lecturer

Tuesday 15<sup>th</sup> February 2011, 6.00 for 6.30pm

Professor Malcolm Hart, University of Plymouth

# A Bug's Life: the Role of Micropalaeontology in Industrial Problem Solving



Micropalaeontology, the study of microscopic fossils, has been used extensively for many years by the hydrocarbon industry for the stratigraphical correlation of rock successions, particularly in cores recovered from boreholes. However, many quarrying or engineering projects also require stratigraphical "control".

Malcolm Hart, Emeritus Professor of Micropalaeontology at the University of Plymouth, together with David Carter and Professor Peter Fooke utilised micropalaeontological techniques during the site investigation for the Thames Barrier, and in 1973-1974 and during the 1980s while working with TransManche Link on the construction of the Channel Tunnel.

This talk demonstrates the importance of micropalaeontology during the site investigation and construction works for major engineering projects, using these two leading UK engineering projects as examples.

Over a research career of 45 years Malcolm has published around 200 research papers and edited 8 books: one of which is the definitive work on the Channel Tunnel. He is a Chartered Geologist and a Chartered Scientist. From 2000 to 2005 he served on the Council of English Nature and is closely involved with the Jurassic Coast World Heritage Site and the English Riviera Geopark. He has recently been awarded Honorary Membership of The Micropalaeontological Society and the Jean Baptiste Lamarck Medal of the European Geosciences Union for 2011.



### Venue

S H Reynolds Lecture Theatre (Room G25), Department of Earth Sciences, University of Bristol, Wills Memorial Building, Queen's Road, Bristol BS8 1RJ. For directions see <http://www.gly.bris.ac.uk/about/directions.html>. Refreshments will be available from 6 pm.

### Contact

For enquiries regarding this event or for any queries regarding the Western Regional Group and forthcoming events please contact us at [wrg@uk.environmentcorp.com](mailto:wrg@uk.environmentcorp.com) or visit our website <http://www.geolsoc.org.uk/gsl/groups/regional/wrg>.

Geological Society, Burlington House, Piccadilly, London, SW1V 0JU

Tel: +44 (0)20 7434 9944 Fax: +44 (0)20 7439 8975 Email: [enquiries@geolsoc.org.uk](mailto:enquiries@geolsoc.org.uk) Web: [www.geolsoc.org.uk](http://www.geolsoc.org.uk)

Registered Charity No. 210161